

Investigating and Remediating Existing/Legacy Cross Bores

Do Not Assume Depth or Location of Sewer or Natural Gas Facilities

Use locating tools to pinpoint facilities or

Calculate depth of gravity sewer or

Use camera to verify no cross bore



If locating is inconclusive or gas facilities are within 3 feet/1 meter of sewer

Establish a visual tolerance/safety zone

Hand dig or use a vacuum truck to expose both facilities

Verify no cross bore has occurred



Repair All Cross Bores, if possible, Before Leaving Site

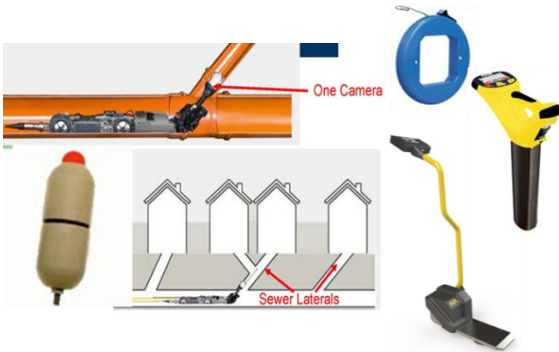
If delayed, inform property owner of the cross bore, the associated risks and that no cleaning should occur

Schedule repair of intersected facilities

Schedule property restoration

1) Do not assume depth or location of sewer or natural gas facilities

- Use locating tools to pinpoint facilities or
- Calculate depth of gravity sewer or
- Use camera to verify no cross bore



2) If locating is inconclusive or gas facilities are within 3 feet/1 meter of sewer

- Establish a visual tolerance/safety zone
- Hand dig or use a vacuum truck to expose both facilities
- Verify no cross bore has occurred



3) Repair all cross bores, if possible, prior to leaving the site

- If delayed, inform property owner of the cross bore, the associated risks and that no cleaning should occur
- Schedule repair of intersected facilities and property restoration

Existing/Legacy Cross Bores



Tailgate Briefing

MAY 2013